

## Task One

Do you enjoy the seasons? The sun is responsible for those seasons. The sun is a star made of burning gas. It is closer to us than any other star. The seasons are caused by the tilt of the Earth's rotational axis away or toward the sun. The hemisphere that is tilted toward the sun is warmer because sunlight travels more directly toward the Earth's surface. At the same time, the hemisphere that is tilted away from the sun is cooler.

**Question:** Why do we have seasons?



## Task Two

Have you ever thought about what it would be like to live on Mars? Mars is the closest planet to Earth, but if you were to travel there, it would take nearly nine months – without stopping?

Once you got there, you would be lighter. On Mars, you are 38% lighter than you are on earth. The air on Mars is made of carbon dioxide. This is what you breathe out, so if you were outside on Mars, you would have to wear a space suit. The atmosphere on Mars is thin, so you would have to protect yourself from the sun. You don't have to do that on Earth because Earth has a thick atmosphere.

**Question:** How would living on Mars be different than Earth?



## Task Three

Mt. Rushmore is a national memorial carved into Mt. Rushmore in the Black Hills of South Dakota. The idea came from Doane Robinson in 1923 in order to promote tourism in South Dakota. The memorial shows four United States Presidents. The Presidents are George Washington, Thomas Jefferson, Theodore Roosevelt, and Abraham Lincoln. It took fourteen years to carve. Each of the President's heads are the height of a six story building. Maintenance on the carvings still occur today. Trained mountain climbers help with this process.

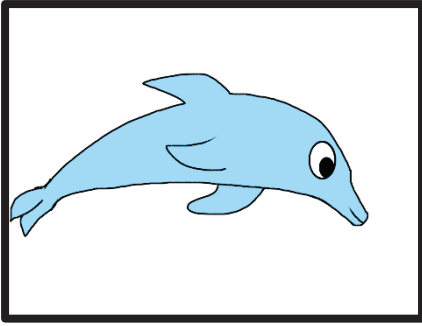
**Task:** Explain why four President's faces were carved into Mt. Rushmore and give one detail about Mt. Rushmore.



## Task Four

Laura Ingalls Wilder was born in 1867 in Wisconsin. She is famous for writing a series of books for children about growing up on the prairie. A TV show was later created that was based on the books. The TV program was called *Little House on the Prairie*. While she was growing up, the family moved several times. In 1874, they moved to Walnut Grove, Minnesota. Even though the family only lived here for two years. This place became the setting for the TV Program. Before she married Almonzo Wilder, she was a teacher in a one room schoolhouse. It was Wilder's daughter, Rose, who encouraged her to write about her childhood and growing up. This led to several books in the "Little House" series.

**Question:** Why is Laura Ingalls Wilder famous?



## Task Five

Dolphins are very interesting mammals, yet they are different than humans. They have many teeth, but they don't use their teeth like you and I. They use their teeth to catch their food, but they swallow the food whole instead of chewing. Dolphins do not drink water like humans. They get all their fresh water from the fish they eat. Even though dolphins are mammals like us, they only have hair when they are born. All of their hair falls out, and they never grown any for the rest of their lives.

Task: Explain how dolphins are different than humans.



## Task Six

The United States Capitol building is an amazing thing to see. The round dome in the middle is called the rotunda. It connects the House of Representative side with the Senate side of the building. The walls of the rotunda are decorated with artwork that depicts important moments in American History. There is also a very famous painting on the ceiling of the rotunda. It is called The Apotheosis of Washington. The rotunda also serves as a meeting place for special events. Some receive special medals and awards, and famous people, such as Rosa Parks, are also honored in the rotunda after they die.

Task: The rotunda has many purposes. Describe two of them.

# Task Recording Page

Task One

Task Two

Task Three

Task Four

Task Five

Task Six